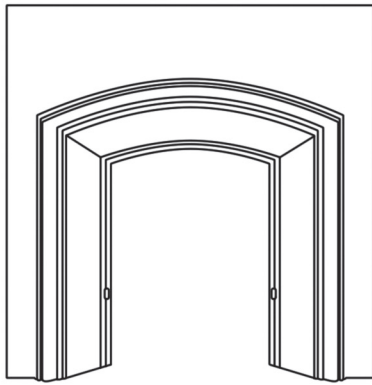
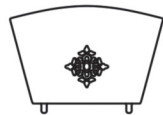


The London Plate Insert Assembly Guide

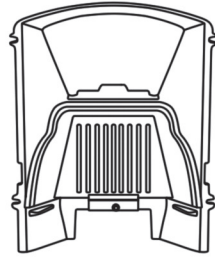
Contents



Fireplace Fascia



Damper Plate



Fireplace Back



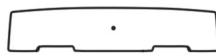
Cast Iron Firebrick Retaining Plate



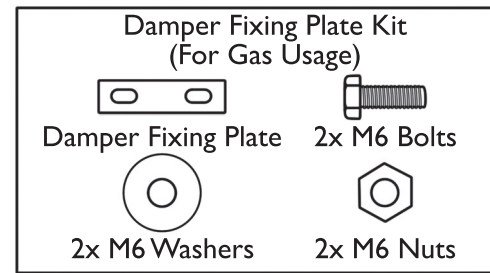
Grate



Bars



Ashpan Cover



2x Fixing Studs



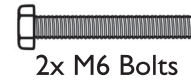
Ashpan Handle



5x M6 Washers



5x M6 Nuts



2x M6 Bolts

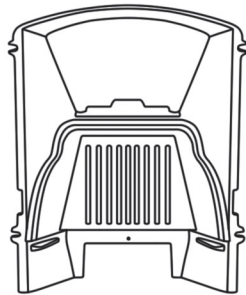
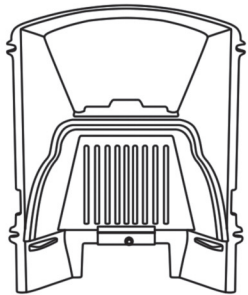


4x M6 Studs

Please note, a 10mm spanner is required to assemble this fireplace.

1 GAS USAGE

SOLID FUEL USAGE

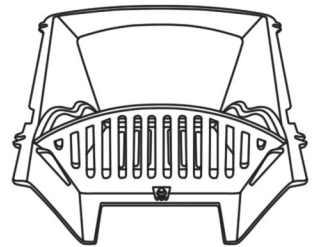
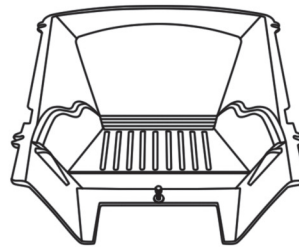
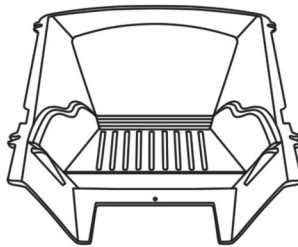


Position Firebrick in place and hold in using the Cast Iron Firebrick Retaining Plate, securing with 1 x M6 Stud, Washer and Bolt.

THIS STEP IS NOT REQUIRED FOR SOLID FUEL USE

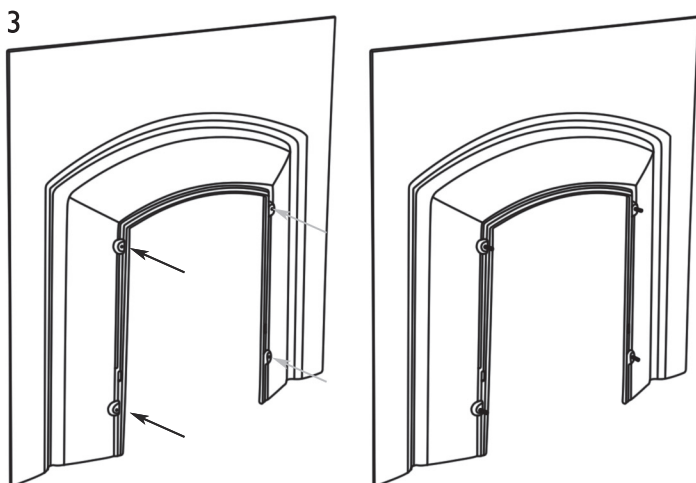
2

SOLID FUEL USAGE

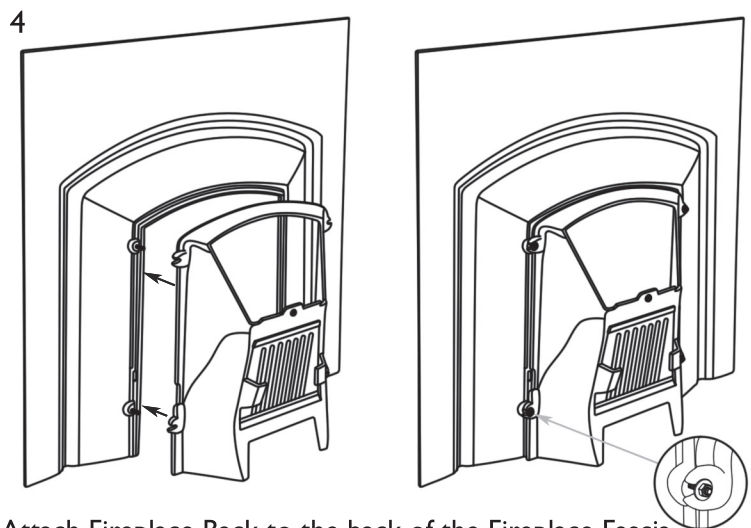


Lay Fireplace Back down on level ground. Position Firebrick in place and then insert 1 x M6 Stud into the hole just below the Firebrick. Insert Grate into the grooves on the Fireplace Back, passing the fixing lug over the M6 Stud. Secure in place with 1 x M6 Washer and 1 x M6 Bolt.

THIS STEP IS NOT REQUIRED FOR GAS USAGE.



Insert the 4 M6 Studs into the back of the Fireplace Fascia.



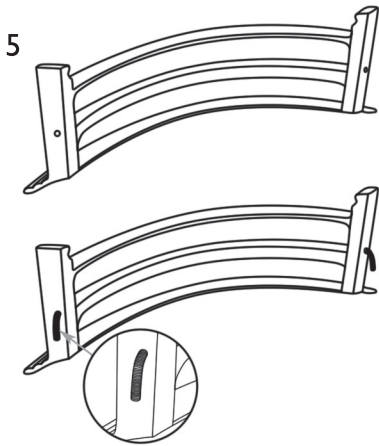
Attach Fireplace Back to the back of the Fireplace Fascia, ensuring that the M6 Studs pass through the fixing brackets on the Fireplace Back. Secure and tighten using 4 M6 Washers and 4 M6 Nuts.



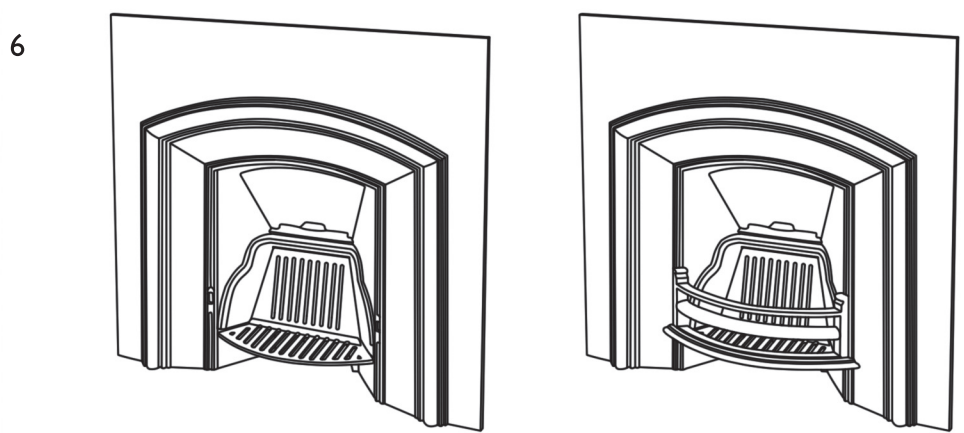
www.carronheating.co.uk

T: 01400 263 319 | E: sales@carronheating.co.uk

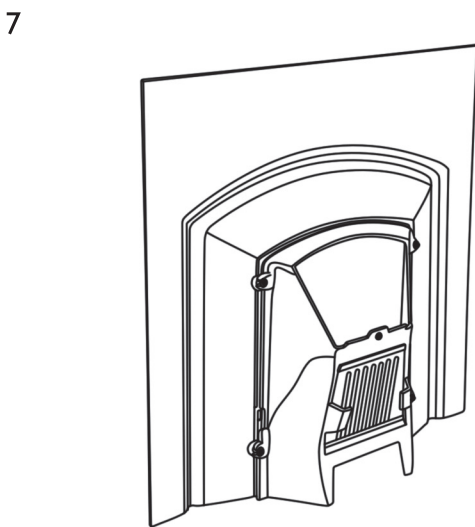
The London Plate Insert Assembly Guide



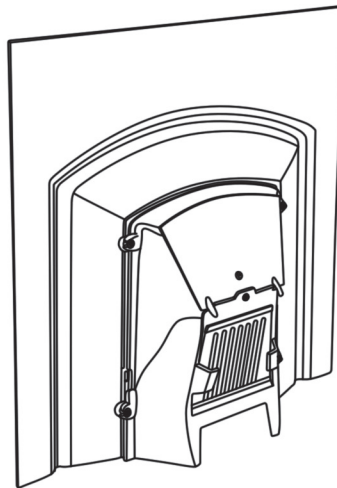
Attach 2x Fixing Studs into the Bars.



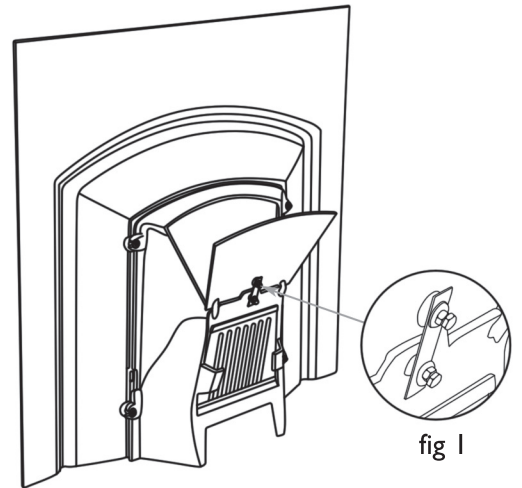
Slot the now attached Fixing Studs into the holes on the front of the Fireplace Fascia. No Grate Required for Gas Usage.



SOLID FUEL USAGE

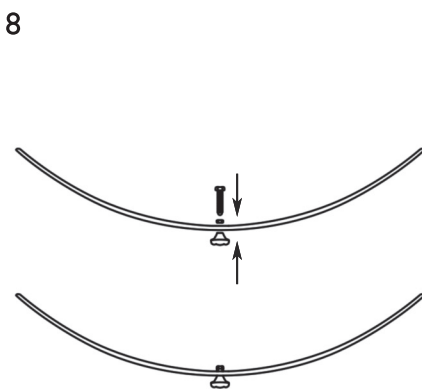


GAS USAGE

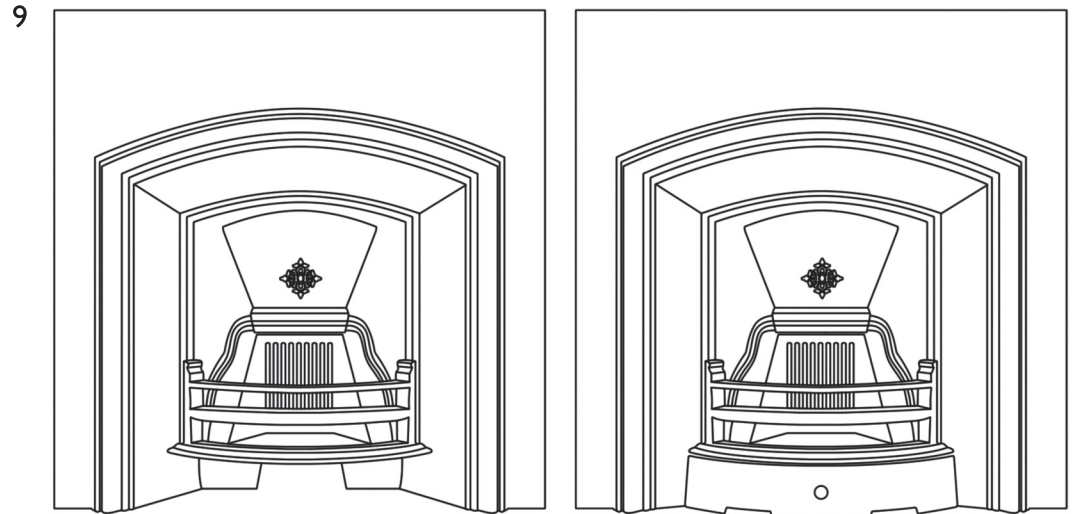


Solid Fuel Usage: Rest the Damper Plate onto the groove on the back of the Fireplace Fascia.

Gas Usage: The Damper Plate must remain fixed open for Gas Usage by using the Damper Plate fixing Kit. Screw M6 Nut fully onto M6 Bolt and lastly M6 washer x2. Attach Damper Fixing Plate as fig 1.



Attach the Ashpan Handle to the Ashpan using an M6 Washer, M6 Nut and M6 Bolt.



To complete, place Ashpan Cover below Grate and Bars on the front of the Fireplace.

Carron

www.carronheating.co.uk

T: 01400 263 319 | E: sales@carronheating.co.uk